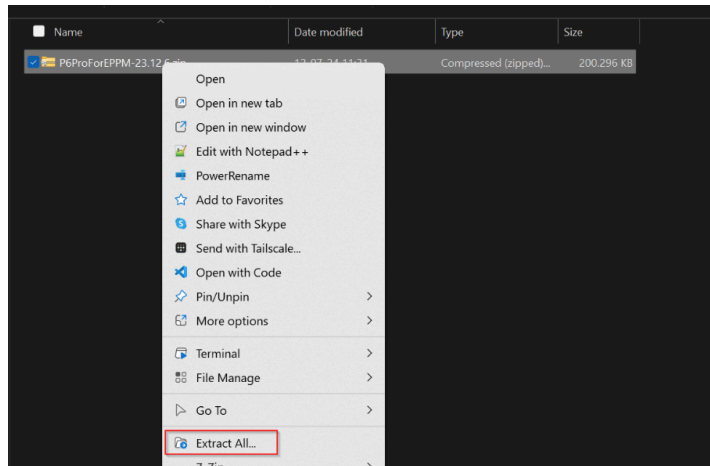


TECK - Installing P6 EPPM 23.12.6

This document describes how to install Primavera P6 EPPM Client version 23.12.6

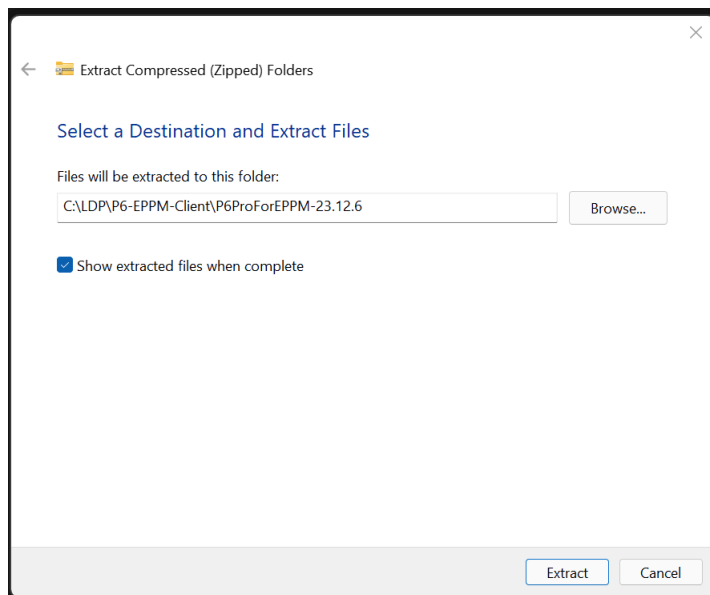
Downloading

URL: <https://oracledat.jkjp.com/P6ProForEPPM-23.12.6.zip>



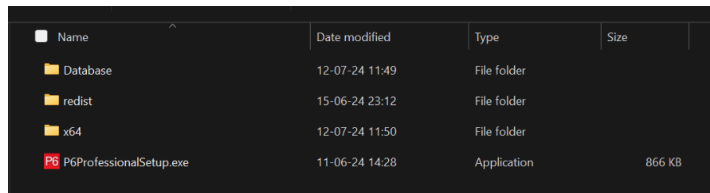
Go to the folder where the file was downloaded.

Right-click the file and click "Extract All"



Define a folder where it should be extracted and click "Extract".

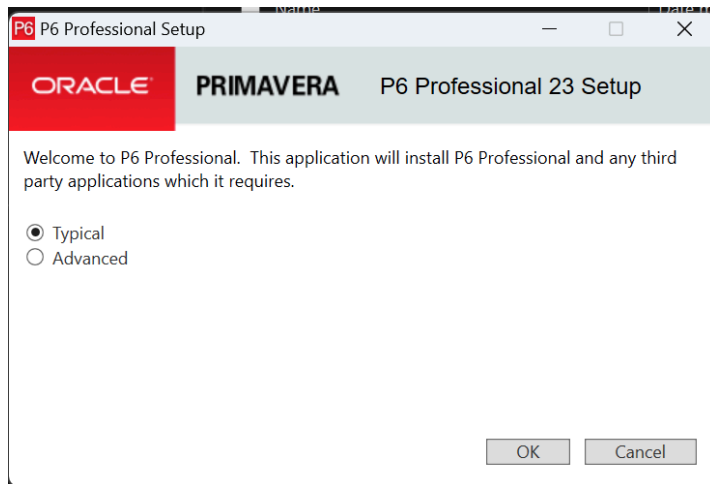
Installing



Name	Date modified	Type	Size
Database	12-07-24 11:49	File folder	
redist	15-06-24 23:12	File folder	
x64	12-07-24 11:50	File folder	
P6ProfessionalSetup.exe	11-06-24 14:28	Application	866 KB

Go into the folder where the files has been extracted.

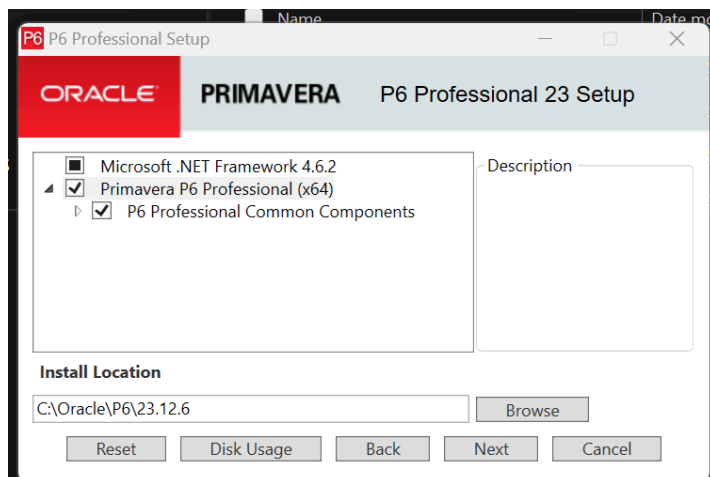
Double click
"P6ProfessionalSetup.exe"



Choose the "Advanced" install option

Uncheck the "Replace existing version" option.

Then click "OK"



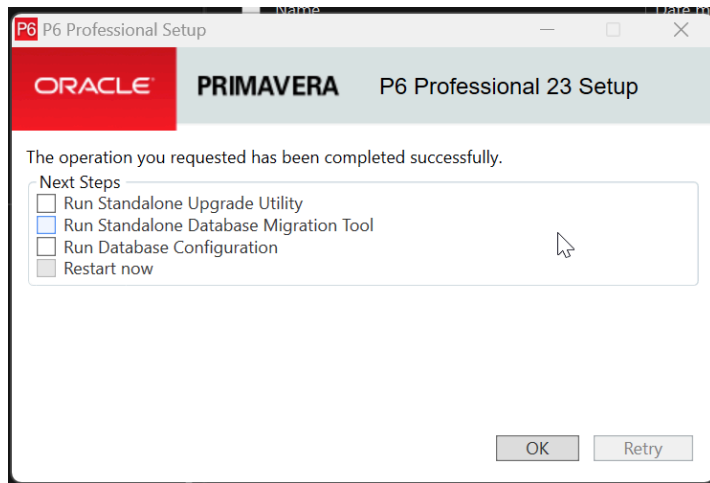
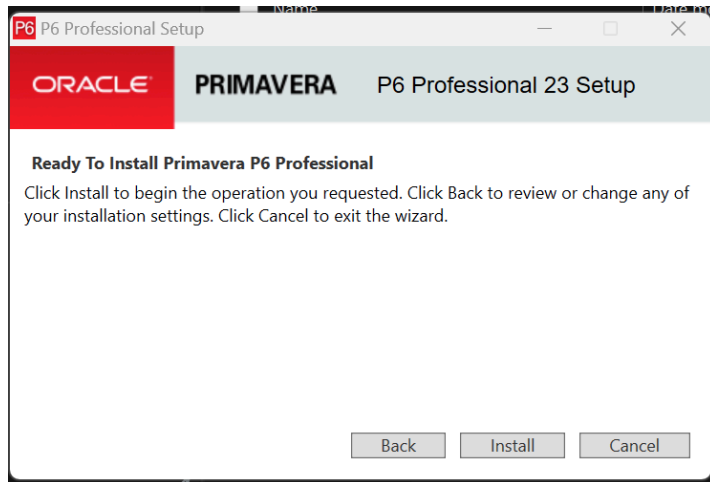
Click the "Primavera P6 Professional (x64)" label.

Change the "Install Location".
In this case, I am using
"C:\Oracle\P6\23.12.6"

Tip: Use the same for all users.

Then, click "Next"

Click "Install"



Uncheck all options.

Click "OK"

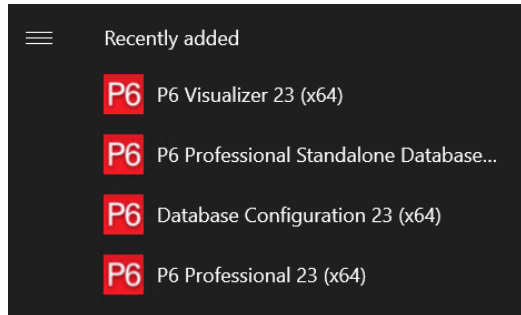
Configuration

These are the settings for the database

	A	B
1	PROD	
2	Driver Type	P6 Pro Cloud Connect
3	Database Alias	PROD
4	Connection Sting	PROD@ https://oracledat.jkjp.com/p6procloudconnect
5	Read Timeout	9999
6	Use SAML SSO	disabled
7	Enable local cache	disabled
8		

You can download this file <https://oracledat.jkjp.com/PRMBootStrapV2.xml> and put it in "C:\Oracle\P6\23.12.6"

Running P6 EPPM Client



Click on the "Windows Start" icon.

Search and click "P6 Professional 23 (x64)"

A screenshot of the P6 Professional 23 login window. The window title is 'P6 Professional 23'. It has a login form with the following fields: 'Login Name' with the value 'admin', and 'Password' which is empty. Below these fields is an 'Advanced' section with a dropdown for 'Database' set to 'PROD' and a dropdown for 'Language' set to 'English (United States)'. At the bottom of the form are two buttons: 'Connect' (blue) and 'Disconnect' (grey). Below the buttons is a link 'Edit database configuration'. At the very bottom of the window, there is a small text block containing release and copyright information.

P6 Professional 23

Login Name
admin

Password

▼ Advanced

Database
PROD

Language
English (United States)

Connect Disconnect

[Edit database configuration](#)

Release (23.12.6.50168)
Copyright (c) 1994, 2024. Oracle and/or its affiliates. Oracle®, Java, MySQL, and NetSuite are registered trademarks of Oracle and/or its affiliates. Other names may be trademarks of their respective owners.

Provide your credentials.

Expand the "Advanced" option,
select the database that you want
connect.

Click "Connect"

Primavera P6 Professional 23 : (No current project)

FileEditViewProjectEnterpriseToolsHelp

Projects

Layout: Projects

Project ID	Project Name	July 2024	August 2024	September 2024	October 2024	November 2024	December 2024
		142128	04111825	0108152229	06132027	03101724	0108152
EPS	Enterprise						

GeneralNotebookPlanning ResourcesBudget LogSpending PlanBudget SummaryDatesFundingCodesDefaultsResourcesSettingsCalculations

EPS ID

EPS

EPS Name

Enterprise

Status

Active

Responsible Manager

Enterprise

Project Leveling Priority

10

Check Out Status

Checked In

Checked Out By

Date Checked Out

Project Web Site URL

Launch...

Financial Period Calendar

Portfolio: All Projects

Data Date:

User: admin

DB: PROD (EPPM)